

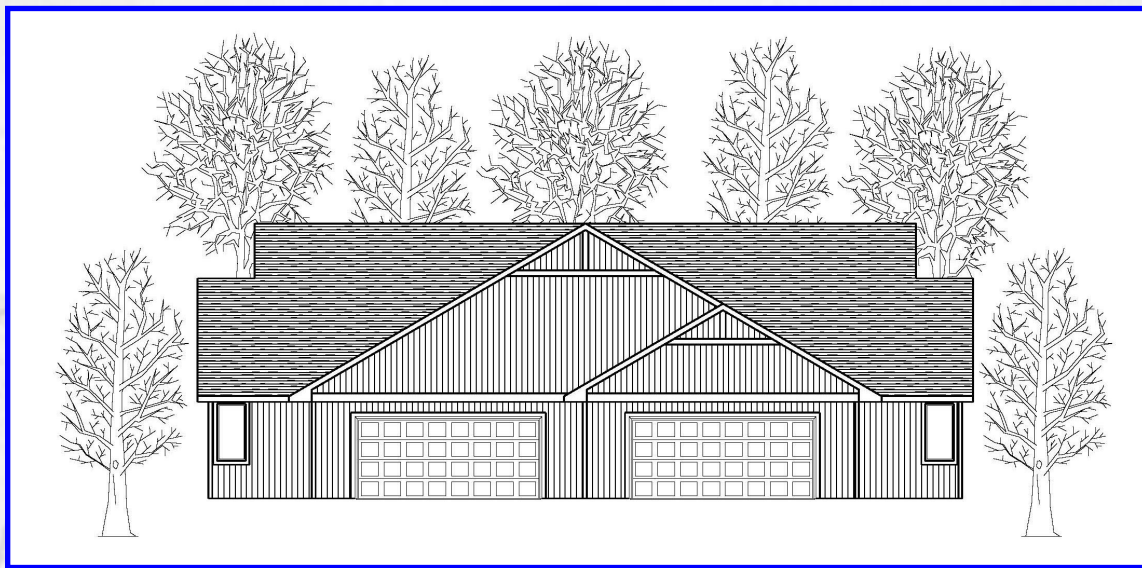


Duplex Home

Skane II

**Two-Story
3 Bedroom**

Skane is a providence in Sweden. Located on the peninsular southern tip of Sweden, it is bounded by water on three sides much like Door County Peninsula. It is of great importance as Sweden's chief food producer, which is why it is often called the "granary of Sweden."



Continuing the Little Sweden tradition, we have designed this villa with a Scandinavian touch - yet each with its own distinct characteristics.

This spacious two-story vacation home offers you and your family 1,908 square feet of living space. Featuring 3 bedrooms, 3 baths, a large living space with fireplace, dining room with well-appointed kitchen, walkout deck, utility room and a two-car garage.



Come see for yourself... at Hedemora Hills

8984 Hwy 42 | Fish Creek, WI 54212

Heather Smith | 920-493-6535

Heather@HeatherSmithHomes.com

www.Little-Sweden.com

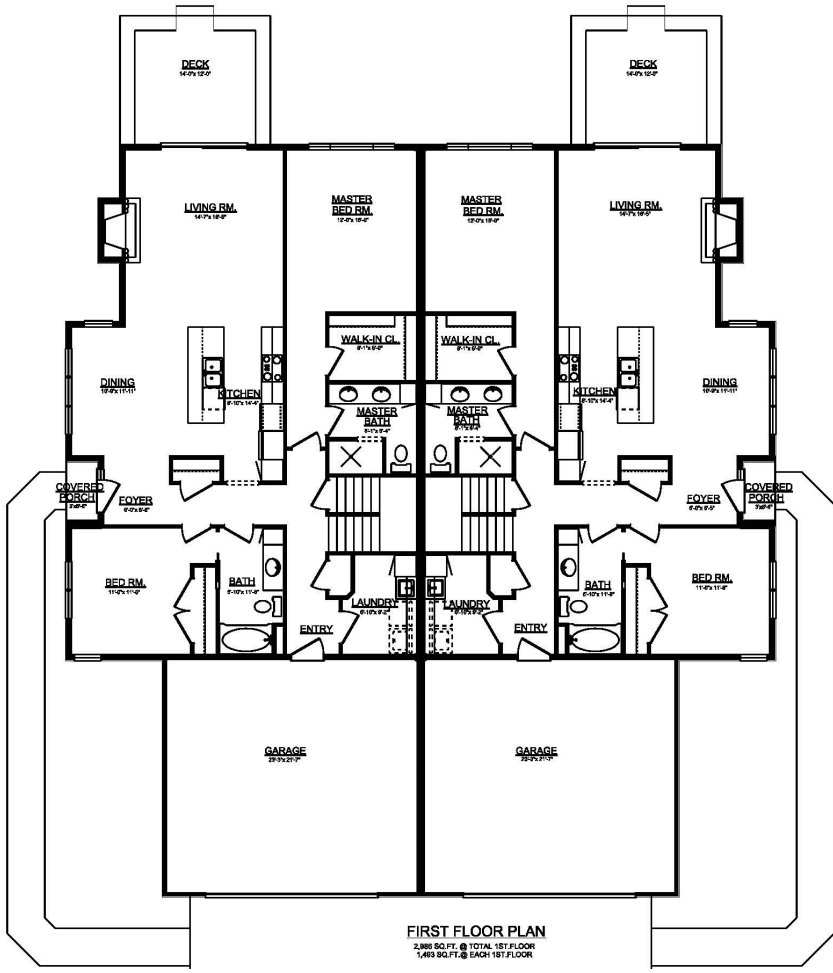


**COLDWELL
BANKER**
REAL ESTATE GROUP

The exclusive marketing agent for Hedemora Hills is Heather Smith. Please contact her if you want additional information, wish to schedule a tour, or desire to make an offer to purchase one of the properties.

Floor Plan

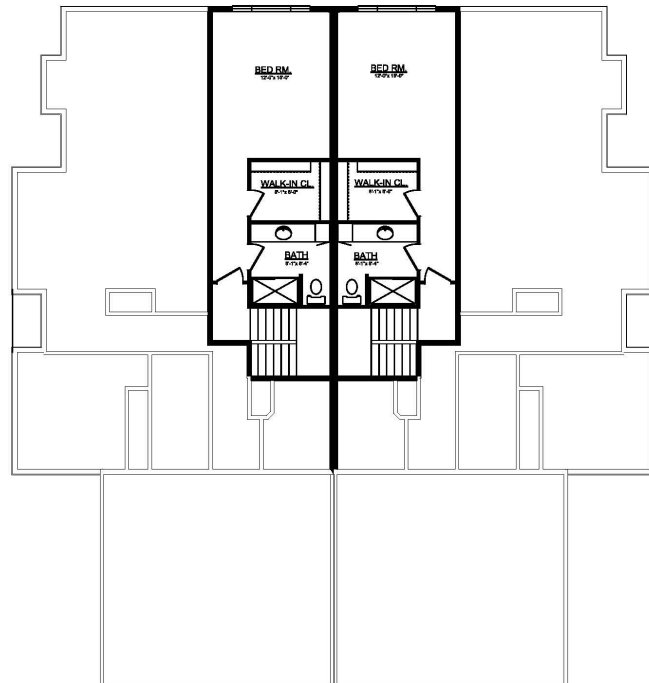
The Skane II (3 Bedroom)



First Floor

FIRST FLOOR PLAN
 2,888 SQ. FT. @ TOTAL 1ST FLOOR
 1,443 SQ. FT. @ EACH 1ST FLOOR

Second Floor



SECOND FLOOR PLAN
 636 SQ. FT. @ TOTAL 2ND FLOOR
 418 SQ. FT. @ EACH 2ND FLOOR